

牛肉部位分布 DIAGRAM OF BEEF CUTS

01 肩胛 Chuck	香嫩多汁 Tender and juicy	02 牛小排 Short Ribs	肉质紧实 Firm meat texture
03 里脊肉 Tenderloin	嚼劲十足 Smooth and tender texture	04 牛肋条 Rib Finger Meat	汁水丰盈 Rich and juicy
05 牛五花 Flank	入口即化 Melts in your mouth	06 牛舌 Beef Tongue	弹牙鲜香 Aromatic with a spongy texture
07 前胸 Brisket	肥瘦相间 Fat or lean	08 横膈膜 Skirt Steak	肉质劲道 Chewy and firm
09 腿肉 Round	嚼劲满满 Big, juicy flavor		

韩牛西冷

Hanwoo beef sirloin

MOP **688**



如有任何食物过敏，请在点餐前告知您的服务员。

Before placing your order, please inform your server if a person in your party has a food allergy.

所有价格须另加10%服务费 | All prices are subject to a 10% service charge

韩牛里脊肉

Hanwoo beef tenderloin

MOP 688



特色肥牛

Signature sliced beef

MOP 98



人气必点
POPULAR
SIGNATURE
DISHERS

特色瘦牛

Signature chuck roll

MOP 138

重磅横膈膜

Beef hanger
steak

MOP **178**

人气必点
POPULAR
SIGNATURE
DISHERS



特色肥瘦

Signature beef belly

MOP **158**



浇汁横膈膜

Beef hanger steak marinated in
barbecue sauce

MOP **158**



秘制肥牛

Signature sliced beef
with signature sauce

MOP **98**



特味肥牛

Signature sliced beef
with spicy sauce

MOP **98**



黑胡椒肋条

Black pepper beef rib

MOP 208

人气必点
POPULAR
SIGNATURE
DISHES



所有价格须另加10%服务费 | All prices are subject to a 10% service charge

极品雪花牛小排

Beef shortrib

MOP 198

人气必点
POPULAR
SIGNATURE
DISHES



所有价格须另加10%服务费 | All prices are subject to a 10% service charge

极品羽下肉
Wagyu flat iron

MOP **188**



所有价格须另加10%服务费 | All prices are subject to a 10% service charge

香葱牛舌

Ox tongue with
spring onion

MOP 98

人气必点
POPULAR
SIGNATURE
DISHERS



厚切牛舌

Thick cut ox tongue

MOP 98



Beef
Selection

所有价格须另加10%服务费 | All prices are subject to a 10% service charge

雪花肋条

Beef rib

MOP **128**



牛肋排

Marinated beef rib

MOP **208**



Beef
Selection

所有价格须另加10%服务费 | All prices are subject to a 10% service charge

拌海藻

Marinated spicy seaweed salad

MOP 28



辣白菜

Spicy pickled cabbage

MOP 28

生菜

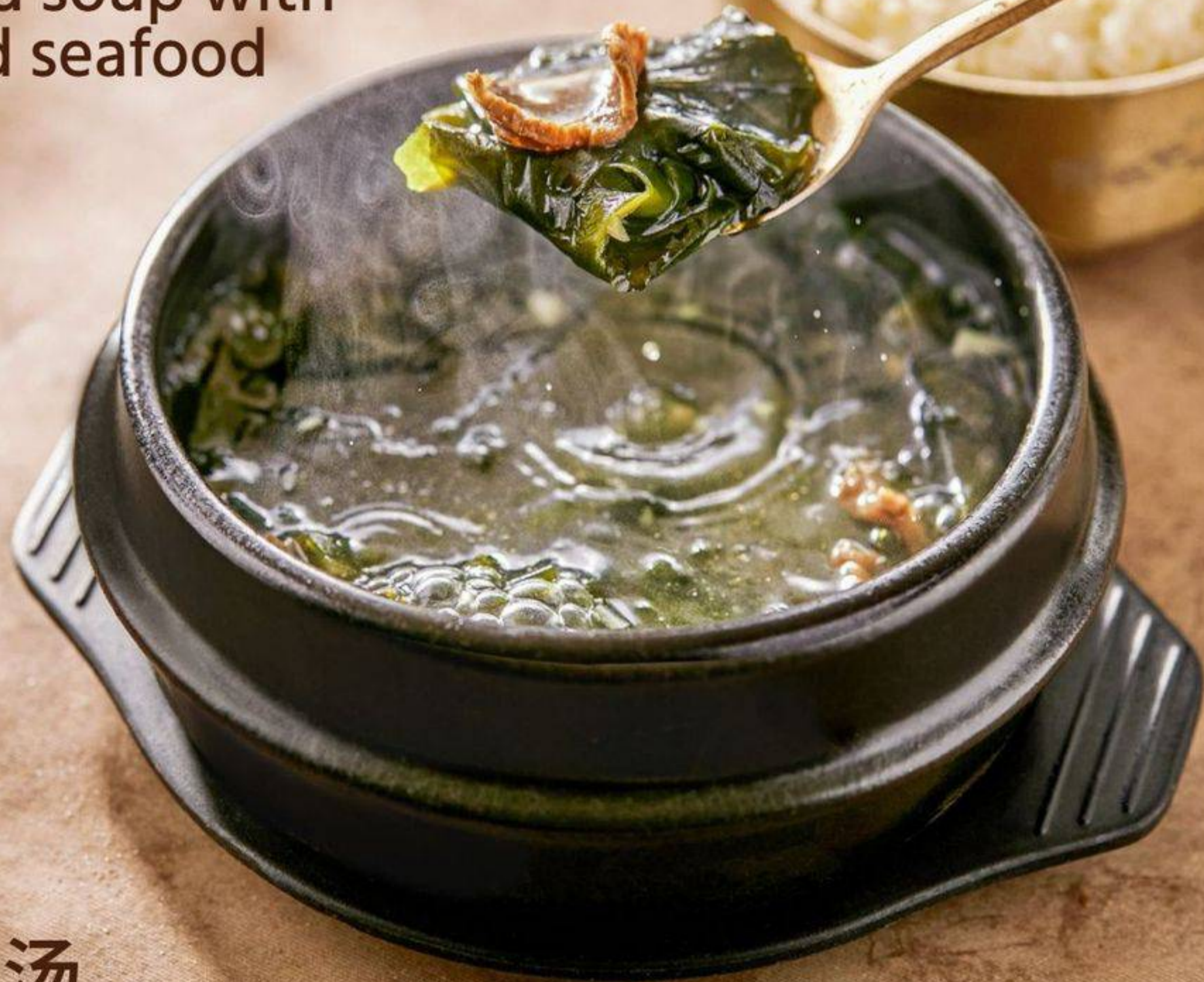
Lettuce

MOP 28

海带汤

Seaweed soup with
beef and seafood

MOP 68



嫩豆腐汤

Soft bean curd stew with
chilli paste

MOP 68



火辣鸡爪

Hot and spicy
chicken feet

MOP **58**

人气必点
POPULAR
SIGNATURE
DISHERS



韩式辣炒年糕

Korean spicy stir-fried
rice cake

MOP **88**



Hot
dishes

所有价格须另加10%服务费 | All prices are subject to a 10% service charge

韩牛炒饭

Hanwoo beef fried rice

MOP 408



肥牛饭

Beef Rice

MOP 128

人气必点
POPULAR
SIGNATURE
DISHERS



所有价格须另加10%服务费 | All prices are subject to a 10% service charge

石锅拌饭

Korean bibimbap

MOP **108**



所有价格须另加10%服务费 | All prices are subject to a 10% service charge

荞麦冷面

Chilled buckwheat noodle in cold soup

MOP 88

人气必点
POPULAR
SIGNATURE
DISHERS



海鲜辛拉面

Seafood Shin ramen

MOP 68



所有价格须另加10%服务费 | All prices are subject to a 10% service charge

过量饮酒危害健康

禁止向未满十八岁人士销售或提供酒精饮料

所有酒精饮品的酒精含量均高于1.2%

EXCESSIVE DRINKING OF ALCOHOLIC BEVERAGES IS HARMFUL TO HEALTH

THE SALE OR SUPPLY OF ALCOHOLIC BEVERAGES

TO ANYONE UNDER THE AGE OF 18 IS PROHIBITED

ALL ALCOHOLIC BEVERAGES EXCEED 1.2% ALCOHOL BY VOLUME



永利臻典中国葡萄酒大赛
Wynn Signature Chinese Wine Awards

滋味焦香烤肉 佳酿搭配首选

Flavorful barbecued meat, perfected with a wine pairing



铜奖
Bronze Medal

贺兰红 经典干红
中国宁夏

Helanhong Classic
Dry Red Wine,
Ningxia, China

MOP

98 / 杯 glass 468 / 瓶 bottle



所有酒精饮品的酒精含量均高于1.2% | All alcoholic beverages exceed 1.2% alcohol by volume

所有价格须另加10%服务费 | All prices are subject to a 10% service charge



永利臻典中国葡萄酒大赛
Wynn Signature Chinese Wine Awards

滋味焦香烤肉 佳酿搭配首选

Flavorful barbecued meat, perfected with a wine pairing



铜奖
Bronze Medal

诗百篇特选雷司令
中国河北

Chapter and Verse
Mastery Riesling,
Hebei, China

MOP

98 / 杯 glass 468 / 瓶 bottle



所有酒精饮品的酒精含量均高于1.2% | All alcoholic beverages exceed 1.2% alcohol by volume

所有价格须另加10%服务费 | All prices are subject to a 10% service charge

鲜柠檬片高球鸡尾酒

Brewguru Fresh Lemon Highball

MOP 88

鲜青柠片高球鸡尾酒

Brewguru Fresh Lime Highball

MOP 88



所有酒精饮品的酒精含量均高于1.2% | All alcoholic beverages exceed 1.2% alcohol by volume

所有价格须另加10%服务费 | All prices are subject to a 10% service charge

青岛啤酒

Tsing Tao Beer

MOP 38

海特啤酒

Hite Beer

MOP 38



所有酒精饮品的酒精含量均高于1.2% | All alcoholic beverages exceed 1.2% alcohol by volume

所有价格须另加10%服务费 | All prices are subject to a 10% service charge

MOP

杯 glass

瓶 bottle

黛拉梦 香槟 法国

Delamotte Brut NV,
Champagne, France

128

598

拉帕乌拉 长相思 纽西兰

Rapaura Spring Reserve
Sauvignon Blanc, New Zealand

78

298

巴雷特酒庄 波尔多 法国

Chateau Baret, Bordeaux, France

118

478



所有酒精饮品的酒精含量均高于1.2% | All alcoholic beverages exceed 1.2% alcohol by volume

所有价格须另加10%服务费 | All prices are subject to a 10% service charge

MOP

作 雅乃智 纯米吟醸 300毫升

218

Zaku Miyabi No Tomo Junmai Ginjo (300ml)

醸し人九平次 纯米大吟醸
雄町 50 Sauvage 720毫升

748

Kamoshibito Kuheiji Junmai Daiginjo
Omachi 50 Sauvage (720ML)

醸し人九平次 彼の地
纯米大吟醸 720毫升

1,098

Kamoshibito Kuheiji Kanochi Junmai
Daiginjo (720ML)

出羽桜 吟醸酒 180毫升

148

Dewazakura Ginjo 180ML



所有酒精饮品的酒精含量均高于1.2% | All alcoholic beverages exceed 1.2% alcohol by volume

所有价格须另加10%服务费 | All prices are subject to a 10% service charge

MOP

贵州茅台53% (500毫升)
Kweichow Moutai 53% (500ml)

5788

五粮液 52% (500毫升)
Wu Liang Ye 52% (500ml)

2488

五粮液52% (50毫升)
Wu Liang Ye 52% (50ml)

498

洋河 蓝色经典 梦之蓝 52% (65毫升)
Yanghe Spirit Classic Dream Blue 52% (65ml)

368

百年糊涂 52% (125毫升)
Bainian Hutu 52% (125ml)

108



所有酒精饮品的酒精含量均高于1.2% | All alcoholic beverages exceed 1.2% alcohol by volume

所有价格须另加10%服务费 | All prices are subject to a 10% service charge

可口可乐

Coca cola

MOP **28**

零度可乐

Coke Zero

MOP **28**

雪碧

Sprite

MOP **28**

Nordaq 纯净水(500毫升)

Nordaq Still Water (500ml)

MOP **22**

奥地利红牛

Austrian Red Bull

MOP **38**

Nordaq 气泡水(500毫升)

Nordaq Sparkling Water (500ml)

MOP **22**



苹果汁

Apple Juice

MOP **38**

紅莓汁

Cranberry Juice

MOP **38**

橙汁

Orange Juice

MOP **38**

西瓜汁

Watermelon Juice

MOP **38**

