



## 廚師發辦·Omakase

Omakase 料理的震撼感來源於對食材本身尊重，  
尊重時節，應季出品，  
不時不食。

Omakase, rooted in the reverence for ingredients, signifies a journey of craftsmanship.  
Our carefully crafted dishes showcase the finest seasonal ingredients,  
handpicked for their quality and freshness.

O M A



K A S E

年輕人的第一次Omakase  
Curating Your First Omakase Experience

鮨政·為新鮮而生  
Sushi Masa · Bringing Fresh Ingredients to Life



## 廚師發辦·Omakase 388

Omakase 388

**MOP** 388

時令·前菜  
Seasonal appetizer

前菜·料理  
Appetizer

板前·手握壽司 (八貫)  
Sushi (8 pieces)

時令手卷  
Seasonal handroll sushi

湯物  
Soup

甜品  
Dessert

圖片僅供參考 | Images are for reference only

如有任何食物過敏，請在點餐前告知您的服務員。

Before placing your order, please inform your server if a person in your party has a food allergy.

所有價格須另加10%服務費 | All prices are subject to a 10% service charge



## 廚師發辦·Omakase 568

### Omakase 568

**MOP** 568

時令·前菜

Seasonal appetizer

旬·刺身 (三切)

Sashimi (3 pieces)

鮪政·招牌菜

超低温飄雪鵝肝配吞拿魚壽司

Signature foie gras with  
tuna sushi

湯物

Soup

漬物

Pickle

刺身·薄造

Thinly sliced white fish

時令·卷物

Seasonal handroll sushi

甜品

Dessert

和食·料理

Cooked dish

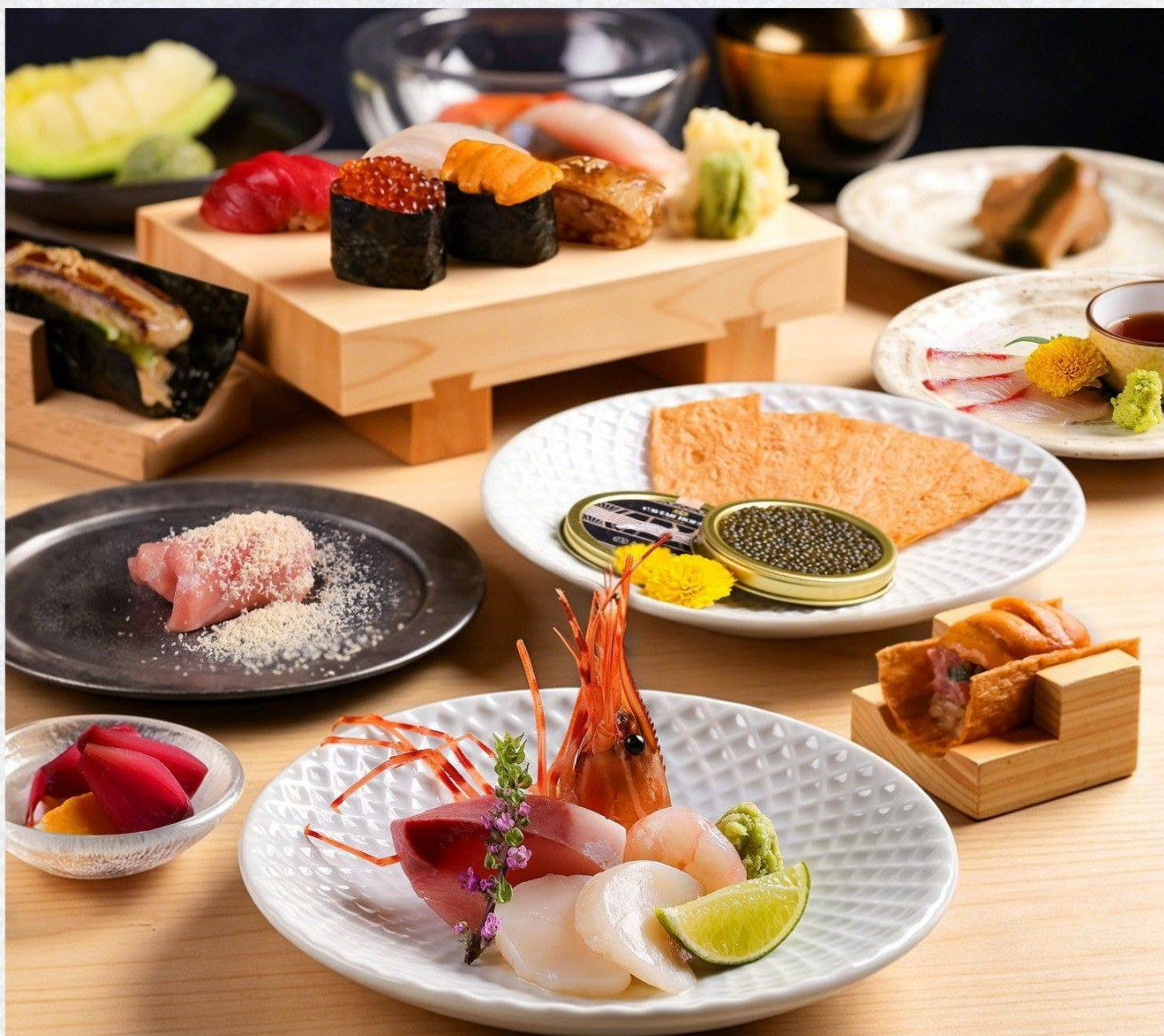
板前·手握壽司 (五貫)

Sushi (5 pieces)

揚物·料理

Fried dishes

所有價格須另加10%服務費 | All prices are subject to a 10% service charge



## 廚師發辦·Omakase 988

### Omakase 988

**MOP 988**

時令·前菜

Seasonal appetizer

鮭政·招牌菜

超低温飄雪鵝肝配吞拿魚魚腩

Signature foie gras  
with toro

板前·手握壽司 (六貫)

Sushi (6 pieces)

魚子醬配炸鱈魚片(10克/盒)

Prunier caviar (10/box)  
with crispy cod fish

漬物

Pickle

海膽創意料理

海膽熱狗塔可

Sea urchin and tuna taco

時令·卷物

Seasonal handroll sushi

湯物

Soup

旬·刺身 (三切)

Sashimi (3 pieces)

刺身·薄造

Thinly sliced white fish

和食·料理

Cooked dishes

甜品及水果

Dessert and fruit

所有價格須另加10%服務費 | All prices are subject to a 10% service charge

旬・刺身盛 (十切)

Premium sashimi platter ( 10 pieces )

(赤身, 三文魚, 油甘魚, 帆立貝, 甜蝦)

( Lean tuna, salmon, yellow tail, scallop and sweet shrimp )

MOP 538



所有價格須另加10%服務費 | All prices are subject to a 10% service charge



❁ 鮨政・極尚刺身盛 (十二切)  
Deluxe sashimi platter ( 12 pieces )

(牡丹蝦，吞拿魚腹，油甘魚腹部，海膽，帆立貝，白身魚薄切)  
( Botan shrimp, tuna belly, yellow tail belly, uni sea urchin,  
scallop and thinly sliced white fish )

**MOP 968**

所有價格須另加10%服務費 | All prices are subject to a 10% service charge

✿ 自選搭配刺身盛

Custom sashimi platter with seaweed

MOP 838



所有價格須另加10%服務費 | All prices are subject to a 10% service charge

三文魚刺身 (一切)  
Sake salmon sashimi (1 piece)

MOP 42

❁ 三文魚腩刺身 (一切)  
Sake salmon belly sashimi (1 piece)

MOP 42



所有價格須另加10%服務費 | All prices are subject to a 10% service charge

❁ 油甘魚腹刺身 (一切)  
Hamachi yellowtail belly sashimi (1 piece)

MOP 42



油甘魚刺身 (一切)  
Hamachi yellowtail sashimi (1 piece)

MOP 42

❁ 池魚王刺身 (一切)  
Aji horse mackerel  
sashimi (1 piece)

MOP 52



所有價格須另加10%服務費 | All prices are subject to a 10% service charge



❁ 吞拿魚大腹刺身 (一切)  
Toro fatty tuna sashimi (1 piece)  
MOP 148

吞拿魚赤身刺身 (一切)  
Akami tuna  
sashimi (1 piece)

MOP 78

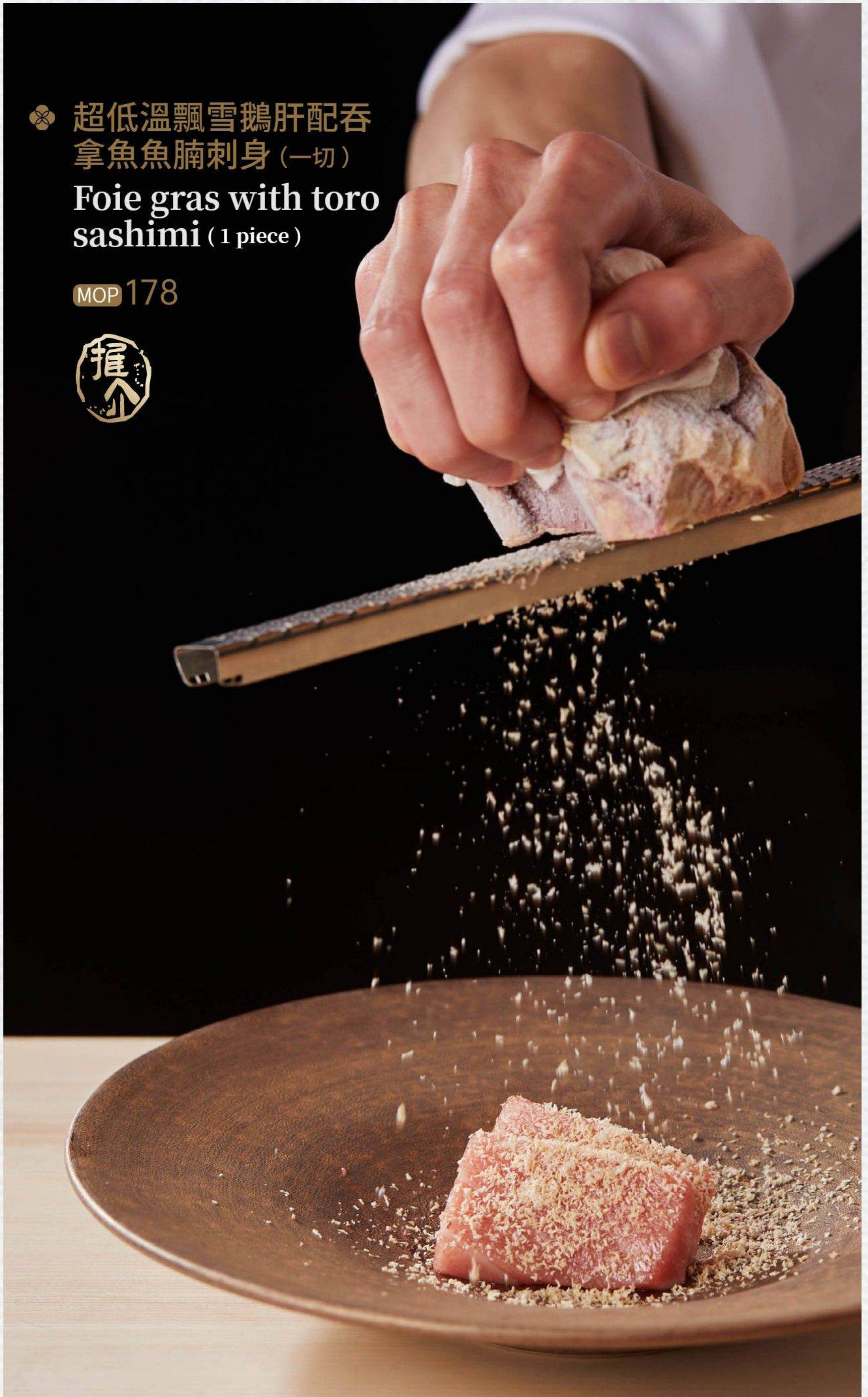
吞拿魚中腹刺身 (一切)  
Chutoro tuna  
sashimi (1 piece)

MOP 108

所有價格須另加10%服務費 | All prices are subject to a 10% service charge

❀ 超低溫飄雪鵝肝配吞  
拿魚魚腩刺身(一切)  
Foie gras with toro  
sashimi (1 piece)

MOP 178



所有價格須另加10%服務費 | All prices are subject to a 10% service charge



❁ 白身魚姿造薄切

Thinly sliced seasonal white fish sashimi

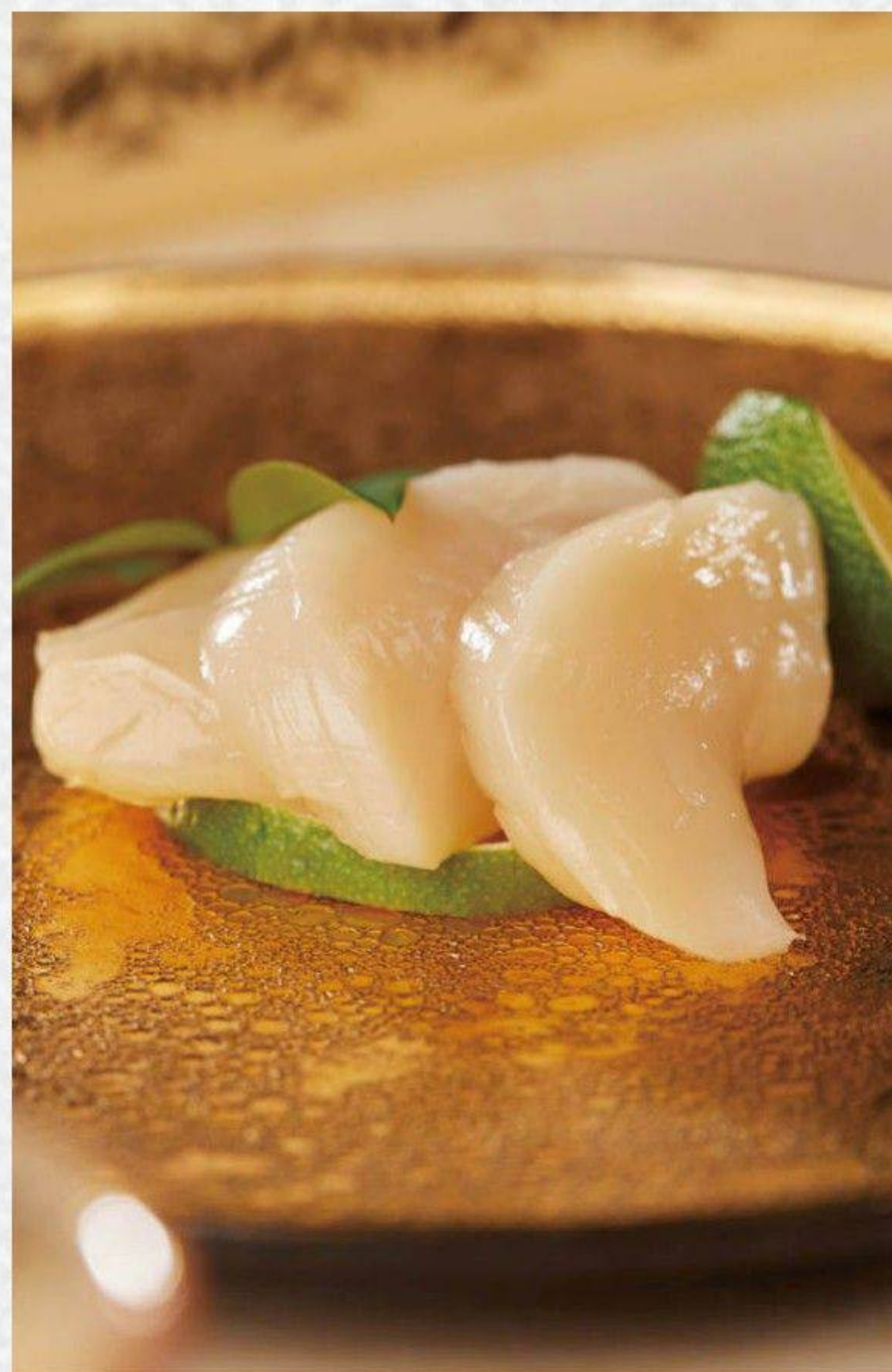
MOP 208

所有價格須另加10%服務費 | All prices are subject to a 10% service charge



❁ 牡丹蝦刺身  
Botan ebi shrimp sashimi

MOP 98



❁ 帆立貝刺身  
Hotate scallop sashimi

MOP 78

甜蝦刺身 (五隻)

Amaebi sweet shrimp sashimi ( 5 pieces )

MOP 78

❁ 海膽刺身 (30克)  
Uni sea urchin sashimi (30g)

MOP 318



所有價格須另加10%服務費 | All prices are subject to a 10% service charge

❁ 魚子醬配炸鱈魚片 (10克/盒)

Prunier caviar with crispy cod fish (10g/box)

MOP 188



所有價格須另加10%服務費 | All prices are subject to a 10% service charge



❁ 三文魚腩壽司  
Sake salmon belly sushi  
MOP 32

❁ 三文魚壽司  
Sake salmon sushi  
MOP 22

❁ 紫蘇文甲魷魚壽司  
Ika squid with  
shiso sushi  
MOP 42



❁ 池魚王壽司  
Aji horse  
mackerel sushi

MOP 58

油甘魚壽司  
Hamachi  
yellowtail sushi

MOP 32



❁ 油甘魚腹壽司  
Hamachi yellowtail belly sushi

MOP 42

❁ 帆立貝壽司  
Hotate scallop sushi

MOP 58



❁ 黑松露鯛魚壽司  
Black truffle seabream sushi

MOP 68

❁ 三文魚籽壽司  
Ikura salmon roe sushi

MOP 58



甜蝦壽司  
Amaebi sweet  
shrimp sushi

MOP 58

❁ 牡丹蝦壽司  
Botan ebi  
shrimp sushi

MOP 98



吞拿魚赤身壽司  
Akami tuna sushi

MOP 68



吞拿魚中腹壽司  
Chutoro tuna sushi

MOP 108



吞拿魚大腹壽司  
Toro fatty tuna sushi

MOP 158



超低溫飄雪鵝肝  
配吞拿魚魚腩壽司

Foie gras with toro sushi

MOP 178



海膽壽司

Uni sea urchin sushi

MOP 118

所有價格須另加10%服務費 | All prices are subject to a 10% service charge

青瓜手卷  
Cucumber  
handroll

MOP 38

雙蔥吞拿魚蓉手卷  
Tuna with spring  
onion handroll

MOP 78

❁ 海膽熱狗塔可  
Uni sea urchin and tuna taco

MOP 218



所有價格須另加10%服務費 | All prices are subject to a 10% service charge

❁ 流心鴨肝手卷  
Duck foie gras handroll

MOP 108



❁ 蒲燒鰻魚手卷  
Sauce-grilled eel handroll

MOP 42



日式枝豆  
Edamame

MOP 38

漬物二點  
Pickles

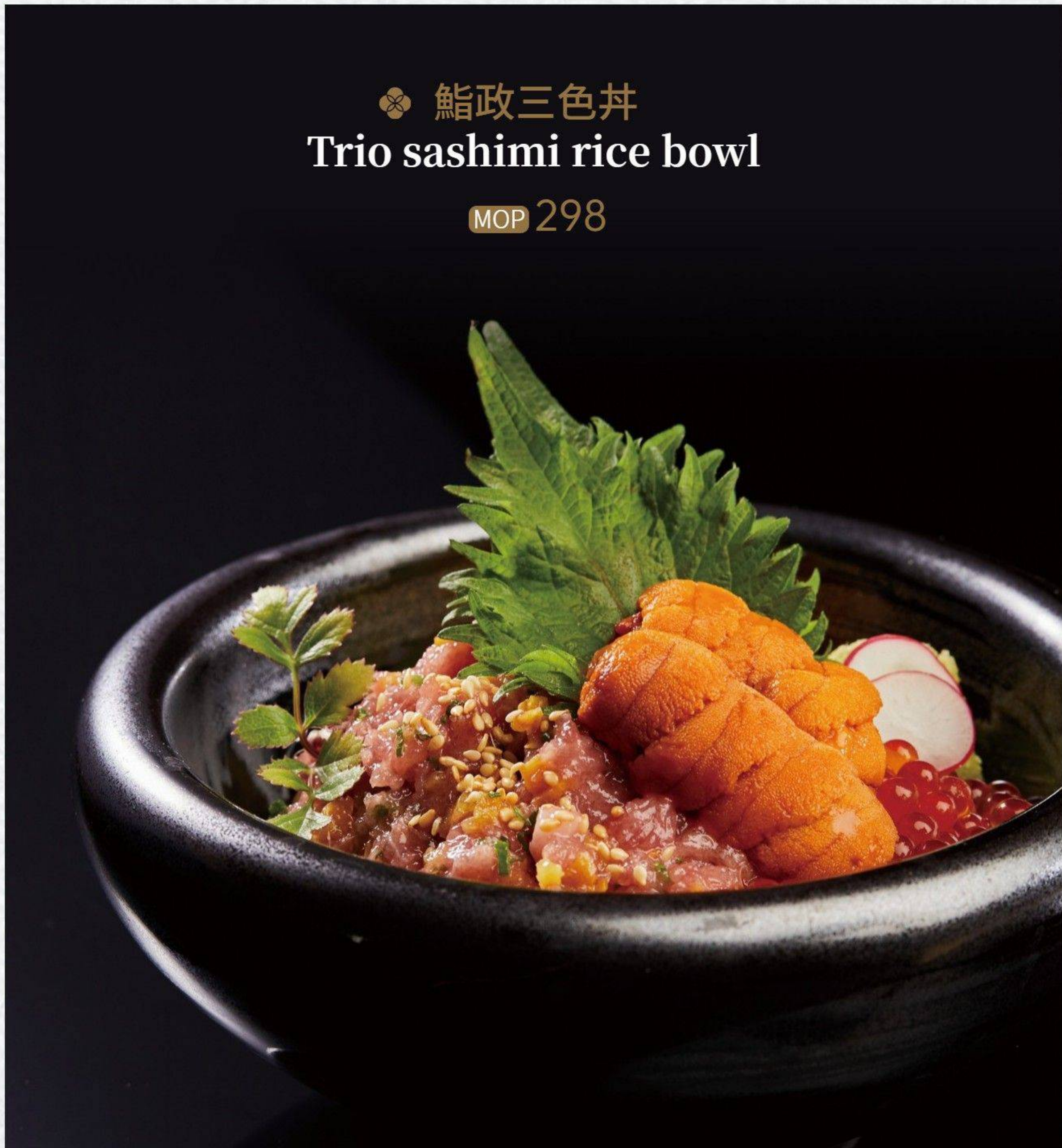
MOP 38



所有價格須另加10%服務費 | All prices are subject to a 10% service charge

❀ 鮭政三色丼  
Trio sashimi rice bowl

MOP 298



角切魚生丼  
Sashimi rice bowl

MOP 188

三文魚親子丼  
Salmon and salmon roe rice bowl

MOP 208

過量飲酒危害健康

禁止向未滿十八歲人士銷售或提供酒精飲料

所有酒精飲品的酒精含量均高於1.2%

EXCESSIVE DRINKING OF ALCOHOLIC BEVERAGES IS HARMFUL TO HEALTH

THE SALE OR SUPPLY OF ALCOHOLIC BEVERAGES

TO ANYONE UNDER THE AGE OF 18 IS PROHIBITED

ALL ALCOHOLIC BEVERAGES EXCEED 1.2% ALCOHOL BY VOLUME

CONSUMIR BEBIDAS ALCOÓLICAS EM EXCESSO PREJUDICA A SAÚDE

A VENDA OU DISPONIBILIZAÇÃO DE BEBIDAS ALCOÓLICAS

A MENORES DE 18 ANOS É PROIBIDA

TÍTULO ALCOOMETRICO SUPERIOR A 1.2% VOL



永利臻典中國葡萄酒大賽  
Wynn Signature Chinese Wine Awards

板前創意日料 佳釀搭配首選

Creative Japanese delicacies, perfected with a wine pairing



銅獎  
Bronze Medal

賀蘭紅 經典乾紅  
中國寧夏

Helanhong Classic  
Dry Red Wine,  
Ningxia, China

MOP

98 / 杯 glass 468 / 瓶 bottle



所有酒精飲品的酒精含量均高於1.2% | All alcoholic beverages exceed 1.2% alcohol by volume

所有價格須另加10%服務費 | All prices are subject to a 10% service charge



永利臻典中國葡萄酒大賽  
Wynn Signature Chinese Wine Awards

板前創意日料 佳釀搭配首選

Creative Japanese delicacies, perfected with a wine pairing



銅獎  
Bronze Medal

詩百篇特選雷司令  
中國河北

Chapter and Verse  
Mastery Riesling,  
Hebei, China

MOP

98 / 杯 glass 468 / 瓶 bottle



所有酒精飲品的酒精含量均高於1.2% | All alcoholic beverages exceed 1.2% alcohol by volume

所有價格須另加10%服務費 | All prices are subject to a 10% service charge

朝日啤酒  
Asahi Super Dry Beer

MOP 42

青島啤酒  
Tsing Tao Beer

MOP 38

有米啤酒  
Got Rice beer

MOP 38



所有酒精飲品的酒精含量均高於1.2% | All alcoholic beverages exceed 1.2% alcohol by volume

所有價格須另加10%服務費 | All prices are subject to a 10% service charge

	MOP	
	杯 / glass	瓶 / bottle
<b>黛拉夢 香檳 法國</b> Delamotte Brut NV, Champagne, France	128	598
<b>拉帕烏拉 長相思 紐西蘭</b> Rapaura Spring Reserve Sauvignon Blanc, New Zealand	78	298
<b>巴雷特酒莊 波爾多 法國</b> Chateau Baret, Bordeaux, France	118	478



所有酒精飲品的酒精含量均高於1.2% | All alcoholic beverages exceed 1.2% alcohol by volume

所有價格須另加10%服務費 | All prices are subject to a 10% service charge

醸し人九平次 純米大吟醸 雄町 50 Sauvage 720毫升  
Kamoshibito Kuheiji Junmai Daiginjo Omachi  
50 Sauvage ( 720ml )

MOP 748

出羽櫻 吟醸酒 180毫升  
Dewazakura Ginjo (180ml)

MOP 148

大湖特別純米酒 鮭政特別版 300毫升  
Taiko Tokubetsu Junmai with Sushi  
Masa Logo ( 300ml )

MOP 328

岩 純米大吟醸 鮭政特別版 720毫升  
IWA5 Hunmai Daiginjo Sushi Masa private  
label (720ml)

MOP 888 ( bottle 瓶 )

MOP 148 ( glass 杯 )



所有酒精飲品的酒精含量均高於1.2% | All alcoholic beverages exceed 1.2% alcohol by volume

所有價格須另加10%服務費 | All prices are subject to a 10% service charge

威士忌高球  
Whisky Highball

MOP 98



所有酒精飲品的酒精含量均高於1.2% | All alcoholic beverages exceed 1.2% alcohol by volume

所有價格須另加10%服務費 | All prices are subject to a 10% service charge

雪碧  
Sprite

MOP 28

Nordaq 純淨水 (500ml 毫升)  
Nordaq Still Water (500ml)

MOP 22

可口可樂  
Coca Cola

MOP 28

Nordaq 氣泡水 (500ml 毫升)  
Nordaq Sparkling Water (500ml)

MOP 22

零度可樂  
Coke Zero

MOP 28

奧地利紅牛  
Austrian Red Bull

MOP 38



所有價格須另加10%服務費 | All prices are subject to a 10% service charge

蘋果汁  
Apple Juice

MOP 38

紅莓汁  
Cranberry Juice

MOP 38

西瓜汁  
Watermelon Juice

MOP 38

橙汁  
Orange Juice

MOP 38



所有價格須另加10%服務費 | All prices are subject to a 10% service charge

特濃咖啡  
Espresso

MOP 22

瑪奇朵咖啡  
Macchiato

MOP 32

雙倍特濃咖啡  
Double Espresso

MOP 32

美式咖啡 (熱/ 凍)  
Americano (Hot/Cold)

MOP 32

牛奶咖啡 (熱/ 凍)  
Latte (Hot/Cold)

MOP 32

意大利泡沫咖啡 (熱/ 凍)  
Cappuccino (Hot/Cold)

MOP 32

摩卡咖啡 (熱/ 凍)  
Mocha (Hot/Cold)

MOP 32



所有價格須另加10%服務費 | All prices are subject to a 10% service charge