



## 厨师发办·Omakase

Omakase 料理的震撼感来源於对食材本身尊重，  
尊重时节，应季出品，  
不时不食。

Omakase, rooted in the reverence for ingredients, signifies a journey of craftsmanship.  
Our carefully crafted dishes showcase the finest seasonal ingredients,  
handpicked for their quality and freshness.

O M A



K A S E

年轻人的第一次Omakase  
Curating Your First Omakase Experience

鮨政·为新鲜而生  
Sushi Masa · Bringing Fresh Ingredients to Life

如有任何食物过敏，请在点餐前告知您的服务员。  
Before placing your order, please inform your server if a person in your party has a food allergy.



## 厨师发办·Omakase 328 (午餐)

Omakase 328 (lunch)

**MOP** 328

时令·蒸物  
Seasonal steamed dish

前菜·料理  
Appetizer

板前·手握寿司 (八贯)  
Sushi (8 pieces)

时令手卷  
Seasonal handroll sushi

汤物  
Soup

甜品  
Dessert

如有任何食物過敏，請在點餐前告知您的服務員。

Before placing your order, please inform your server if a person in your party has a food allergy.

所有價格須另加10%服務費 | All prices are subject to a 10% service charge



## 厨师发办 · Omakase 438

Omakase 438

**MOP** 438

时令·蒸物  
Seasonal steamed dish

前菜·料理  
Appetizer

和食·料理  
Cooked dish

旬·刺身 (三切)  
Sashimi (3 pieces)

板前·手握寿司 (五贯)  
Sushi (5 pieces)

时令·卷物  
Seasonal handroll  
sushi

汤物  
Soup

甜品  
Dessert

所有价格须另加10%服务费 | All prices are subject to a 10% service charge



## 厨师发办 · Omakase 658

Omakase 658

**MOP** 658

时令·蒸物

Seasonal steamed dish

鮨政·招牌菜

超低温飘雪鹅肝配吞拿鱼鱼腩

Signature foie gras  
with toro

时令·卷物

Seasonal handroll sushi

前菜·料理

Appetizer

海胆创意料理

海胆热狗塔可  
Sea urchin and  
tuna taco

汤物

Soup

旬·刺身 (五切)

Sashimi (5 pieces)

板前·手握寿司 (六贯)

Sushi (6 pieces)

甜品及水果

Dessert and fruit

所有价格须另加10%服务费 | All prices are subject to a 10% service charge

旬·刺身盛 (十切)

Premium sashimi platter ( 10 pieces )

(赤身, 三文鱼, 油甘鱼, 帆立贝, 甜虾)

( Lean tuna, salmon, yellow tail, scallop and sweet shrimp )

MOP 538



所有价格须另加10%服务费 | All prices are subject to a 10% service charge



❁ 鮨政·极尚刺身盛 (十二切)  
Deluxe sashimi platter ( 12 pieces )

(牡丹虾，吞拿鱼腹，油甘鱼腹部，海胆，帆立贝，白身鱼薄切)  
( Botan shrimp, tuna belly, yellow tail belly, uni sea urchin,  
scallop and thinly sliced white fish )

MOP 968

所有价格须另加10%服务费 | All prices are subject to a 10% service charge

❀ 自选搭配刺身盛

Custom sashimi platter with seaweed

MOP 838



所有价格须另加10%服务费 | All prices are subject to a 10% service charge

三文鱼刺身 (一切)  
Sake salmon sashimi (1 piece)

MOP 42

❁ 三文鱼腩刺身 (一切)  
Sake salmon belly sashimi (1 piece)

MOP 42



所有价格须另加10%服务费 | All prices are subject to a 10% service charge

❖ 油甘鱼腹刺身 (一切)  
Hamachi yellowtail belly sashimi (1 piece)

MOP 42



油甘鱼刺身 (一切)  
Hamachi yellowtail sashimi (1 piece)

MOP 42

❖ 池鱼王刺身 (一切)  
Aji horse mackerel  
sashimi (1 piece)

MOP 52



所有价格须另加10%服务费 | All prices are subject to a 10% service charge



❁ 吞拿鱼大腹刺身 (一切)  
Toro fatty tuna sashimi (1 piece)  
MOP 148

吞拿鱼赤身刺身 (一切)  
Akami tuna  
sashimi (1 piece)

MOP 78

吞拿鱼中腹刺身 (一切)  
Chutoro tuna  
sashimi (1 piece)

MOP 108

所有价格须另加10%服务费 | All prices are subject to a 10% service charge

❁ 超低温飘雪鹅肝配  
吞拿鱼鱼腩刺身 (一切)  
Foie gras with toro  
sashimi (1 piece)

MOP 178



所有价格须另加10%服务费 | All prices are subject to a 10% service charge



❁ 白身鱼姿造薄切

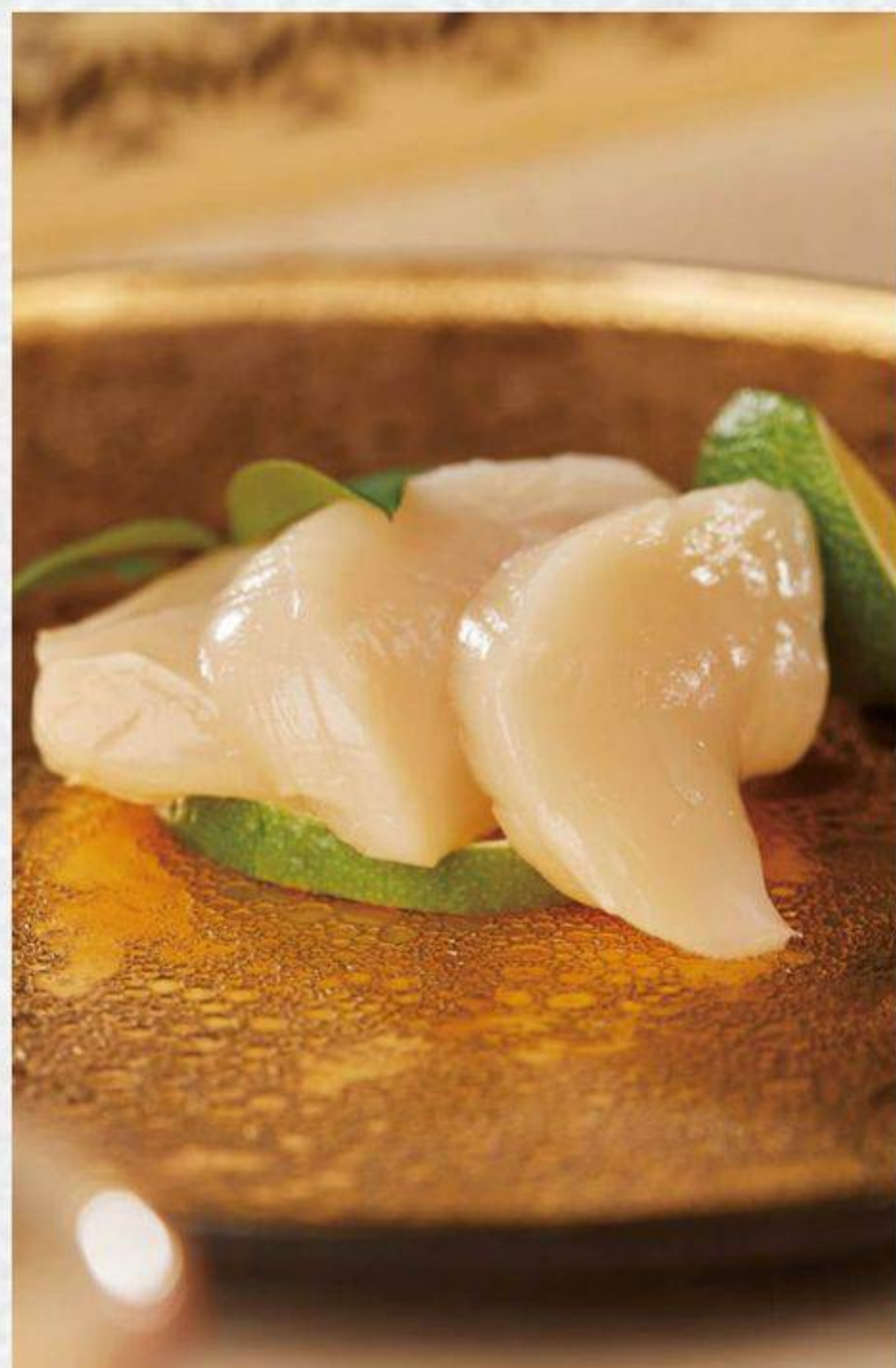
Thinly sliced seasonal white fish sashimi

MOP 208

所有价格须另加10%服务费 | All prices are subject to a 10% service charge



❖ 牡丹虾刺身  
Botan ebi shrimp sashimi  
MOP 98



❖ 帆立贝刺身  
Hotate scallop sashimi  
MOP 78

甜虾刺身 (五只)  
Amaebi sweet shrimp sashimi ( 5 pieces )  
MOP 78

❁ 海胆刺身 (30克)  
Uni sea urchin sashimi (30g)

MOP 318



所有价格须另加10%服务费 | All prices are subject to a 10% service charge



❖ 三文鱼腩寿司  
Sake salmon belly sushi  
MOP 32

❖ 三文鱼寿司  
Sake salmon sushi  
MOP 22

❖ 紫苏文甲鱿鱼寿司  
Ika squid with  
shiso sushi  
MOP 42



❁ 池鱼王寿司  
Aji horse  
mackerel sushi

MOP 58

油甘鱼寿司  
Hamachi  
yellowtail sushi

MOP 32



❁ 油甘鱼腹寿司  
Hamachi yellowtail belly sushi

MOP 42



❁ 帆立贝寿司  
Hotate scallop sushi

MOP 58



❁ 黑松露鲷鱼寿司  
Black truffle seabream sushi

MOP 68

所有价格须另加10%服务费 | All prices are subject to a 10% service charge

❀ 三文鱼籽寿司  
Ikura salmon roe sushi

MOP 58



甜虾寿司  
Amaebi sweet  
shrimp sushi

MOP 58

❀ 牡丹虾寿司  
Botan ebi  
shrimp sushi

MOP 98



❁ 吞拿鱼赤身寿司  
Akami tuna sushi

MOP 68



❁ 吞拿鱼中腹寿司  
Chutoro tuna sushi

MOP 108



❁ 吞拿鱼大腹寿司  
Toro fatty tuna sushi

MOP 158





超低温飘雪鹅肝  
配吞拿鱼鱼腩寿司

Foie gras with toro sushi

MOP 178



海胆寿司

Uni sea urchin sushi

MOP 118

所有价格须另加10%服务费 | All prices are subject to a 10% service charge

青瓜手卷  
Cucumber  
handroll

MOP 38

双葱吞拿鱼蓉手卷  
Tuna with spring  
onion handroll

MOP 78

❁ 海胆热狗塔可  
Uni sea urchin and tuna taco

MOP 218



所有价格须另加10%服务费 | All prices are subject to a 10% service charge

❖ 流心鹅肝手卷  
Foie gras handroll

MOP 108



❖ 蒲烧鳗鱼手卷  
Sauce-grilled eel handroll

MOP 42



日式枝豆  
Edamame

MOP 38

漬物二点  
Pickles

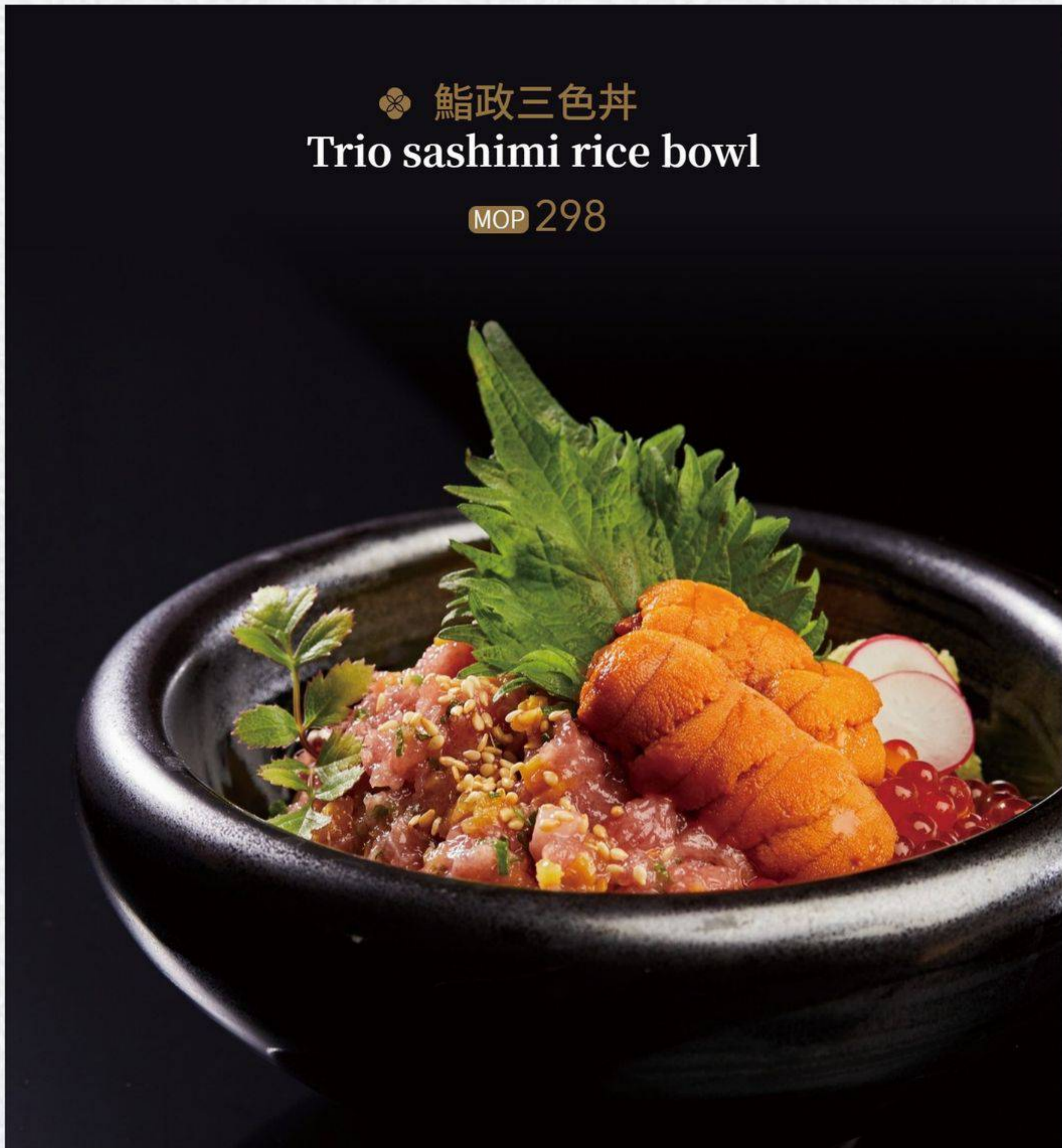
MOP 38



所有价格须另加10%服务费 | All prices are subject to a 10% service charge

❁ 鮭政三色丼  
Trio sashimi rice bowl

MOP 298



角切鱼生丼  
Sashimi rice bowl

MOP 188

三文鱼亲子丼  
Salmon and salmon roe rice bowl

MOP 208

所有价格须另加10%服务费 | All prices are subject to a 10% service charge

过量饮酒危害健康

禁止向未满十八岁人士销售或提供酒精饮料

所有酒精饮品的酒精含量均高于1.2%

EXCESSIVE DRINKING OF ALCOHOLIC BEVERAGES IS HARMFUL TO HEALTH

THE SALE OR SUPPLY OF ALCOHOLIC BEVERAGES

TO ANYONE UNDER THE AGE OF 18 IS PROHIBITED

ALL ALCOHOLIC BEVERAGES EXCEED 1.2% ALCOHOL BY VOLUME



永利臻典中国葡萄酒大赛  
Wynn Signature Chinese Wine Awards

## 板前创意日料 佳酿搭配首选

Creative Japanese delicacies, perfected with a wine pairing



铜奖  
Bronze Medal

贺兰红 经典干红  
中国宁夏

Helanhong Classic  
Dry Red Wine,  
Ningxia, China

MOP

98 / 杯 glass 468 / 瓶 bottle



所有酒精饮品的酒精含量均高于1.2% | All alcoholic beverages exceed 1.2% alcohol by volume

所有价格须另加10%服务费 | All prices are subject to a 10% service charge



永利臻典中国葡萄酒大赛  
Wynn Signature Chinese Wine Awards

## 板前创意日料 佳酿搭配首选

Creative Japanese delicacies, perfected with a wine pairing



铜奖  
Bronze Medal

诗百篇特选雷司令  
中国河北

Chapter and Verse  
Mastery Riesling,  
Hebei, China

MOP

98 / 杯 glass 468 / 瓶 bottle



所有酒精饮品的酒精含量均高于1.2% | All alcoholic beverages exceed 1.2% alcohol by volume

所有价格须另加10%服务费 | All prices are subject to a 10% service charge

朝日啤酒  
Asahi Super Dry Beer

MOP 42

青島啤酒  
Tsing Tao Beer

MOP 38



所有酒精飲品的酒精含量均高於1.2% | All alcoholic beverages exceed 1.2% alcohol by volume

所有價格須另加10%服務費 | All prices are subject to a 10% service charge

MOP

杯 / glass

瓶 / bottle

**黛拉梦 香槟 法国**

128

598

Delamotte Brut NV,  
Champagne, France

**拉帕乌拉 长相思 纽西兰**

78

298

Rapaura Spring Reserve  
Sauvignon Blanc,  
New Zealand

**巴雷特酒庄 波尔多 法国**

118

478

Chateau Baret,  
Bordeaux, France



所有酒精饮品的酒精含量均高於1.2% | All alcoholic beverages exceed 1.2% alcohol by volume

所有价格须另加10%服务费 | All prices are subject to a 10% service charge

作雅乃智 纯米吟酿 300毫升

Zaku Miyabi No Tomo Junmai Ginjo ( 300ml )

MOP 218

醸し人九平次 纯米大吟酿 雄町 50 Sauvage 720毫升

Kamoshibito Kuheiji Junmai Daiginjo Omachi  
50 Sauvage ( 720ml )

MOP 748

醸し人九平次 彼の地 纯米大吟酿 720毫升

Kamoshibito Kuheiji Kanochi Junmai  
Daiginjo ( 720ml )

MOP 1,098

出羽桜 吟酿酒 180毫升

Dewazakura Ginjo 180ml

MOP 148

大湖特别纯米酒 鮭政特别版 300毫升

Taiko Tokubetsu Junmai with Sushi  
Masa Logo ( 300ml )

MOP 328



所有酒精饮品的酒精含量均高於1.2% | All alcoholic beverages exceed 1.2% alcohol by volume

所有价格须另加10%服务费 | All prices are subject to a 10% service charge

威士忌高球  
Whisky Highball

MOP 98



所有酒精饮品的酒精含量均高於1.2% | All alcoholic beverages exceed 1.2% alcohol by volume

所有价格须另加10%服务费 | All prices are subject to a 10% service charge

雪碧  
Sprite

MOP 28

Nordaq 纯净水 (500 毫升)  
Nordaq Still Water (500ml)

MOP 22

可口可乐  
Coca Cola

MOP 28

Nordaq 气泡水 (500 毫升)  
Nordaq Sparkling Water (500ml)

MOP 22

零度可乐  
Coke Zero

MOP 28

奥地利红牛  
Austrian Red Bull

MOP 38



所有價格須另加10%服務費 | All prices are subject to a 10% service charge

蘋果汁  
Apple Juice

MOP 38

紅莓汁  
Cranberry Juice

MOP 38

西瓜汁  
Watermelon Juice

MOP 38

橙汁  
Orange Juice

MOP 38



所有價格須另加10%服務費 | All prices are subject to a 10% service charge

特浓咖啡  
Espresso

MOP 22

玛奇朵咖啡  
Macchiato

MOP 32

双倍特浓咖啡  
Double Espresso

MOP 32

美式咖啡 (热/冻)  
Americano (Hot/Cold)

MOP 32

牛奶咖啡 (热/冻)  
Latte (Hot/Cold)

MOP 32

意大利泡沫咖啡 (热/冻)  
Cappuccino (Hot/Cold)

MOP 32

摩卡咖啡 (热/冻)  
Mocha (Hot/Cold)

MOP 32



所有价格须另加10%服务费 | All prices are subject to a 10% service charge